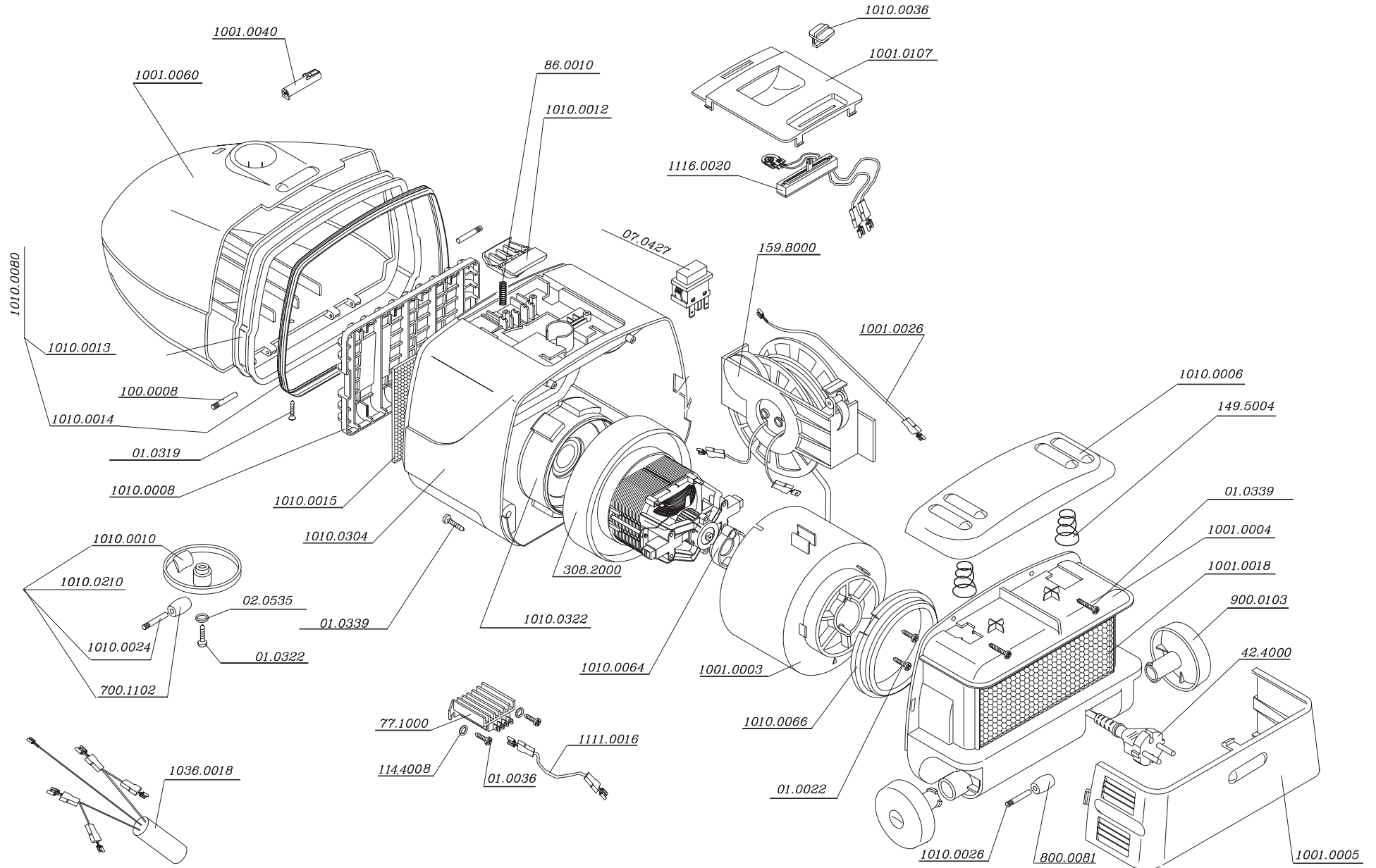


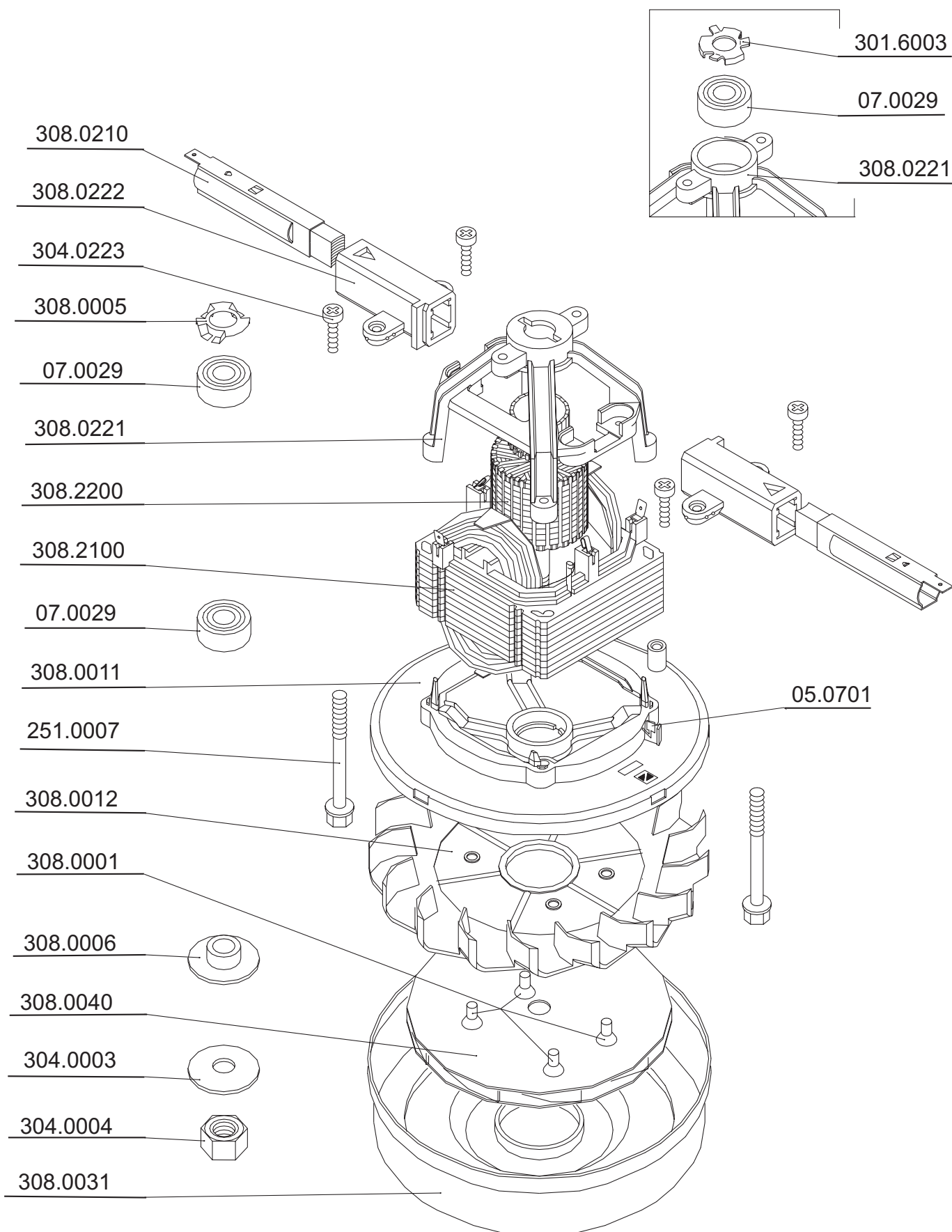
I VACUUM CLEANER

ZELMER TYPE 1117.0E (RAL 5022)

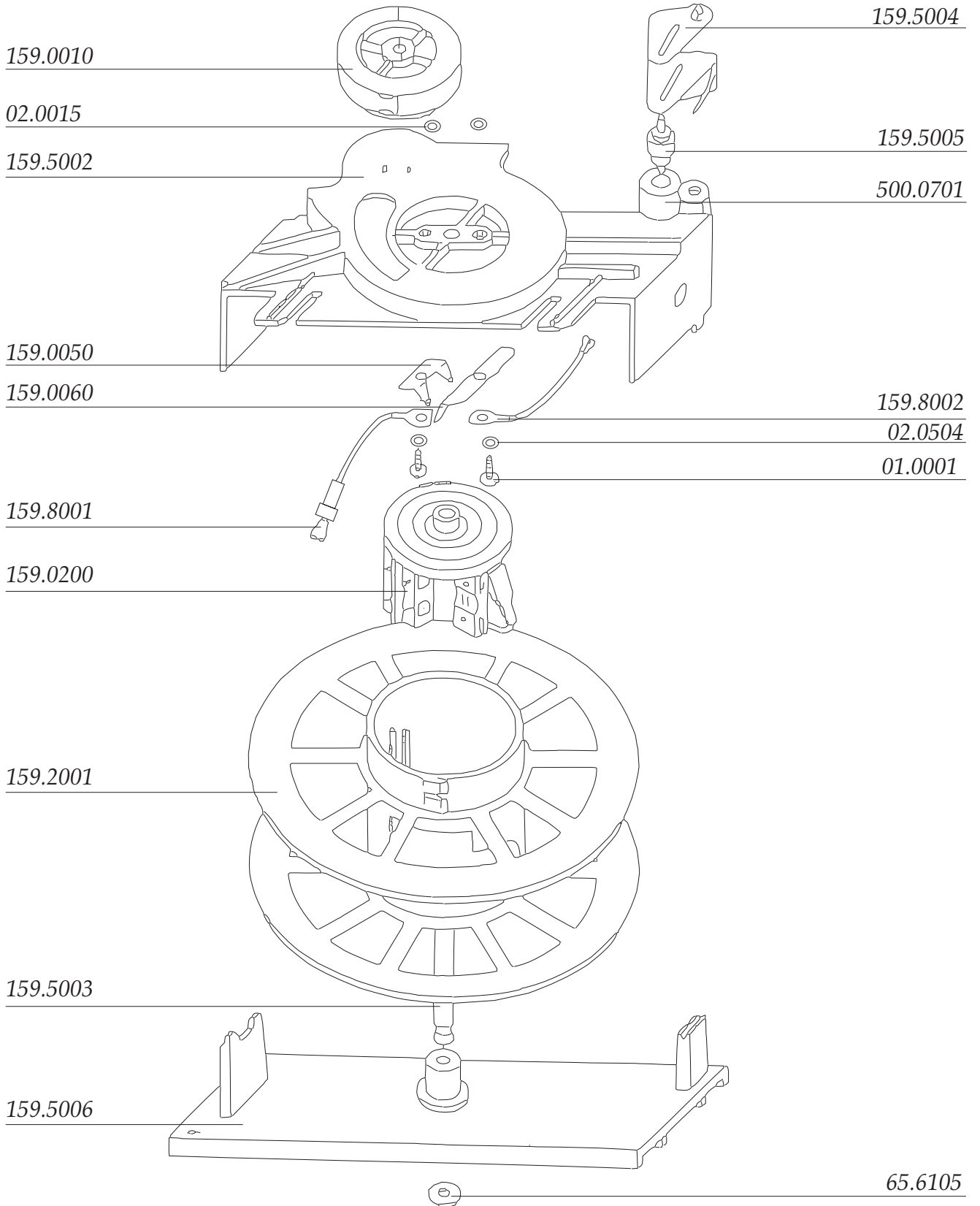
ZELMER HUNGARY



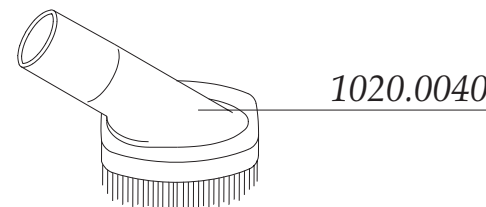
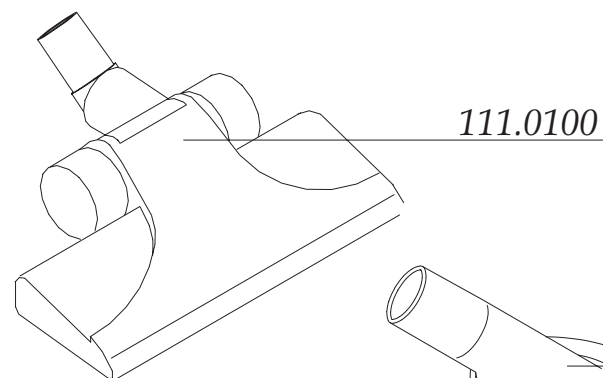
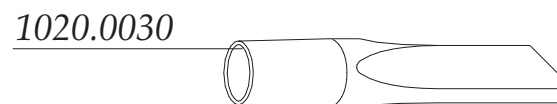
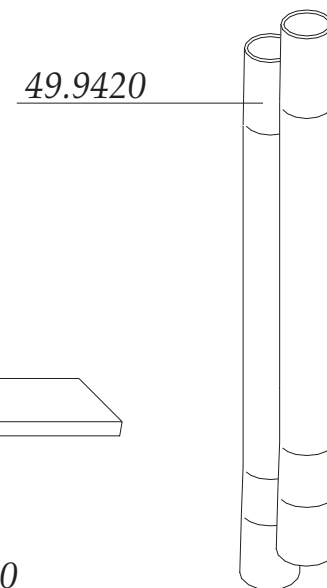
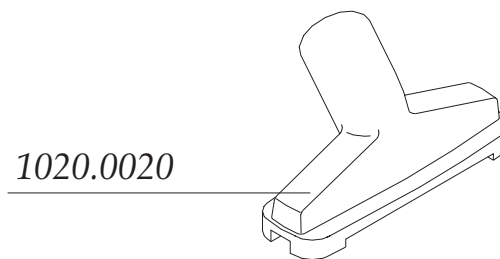
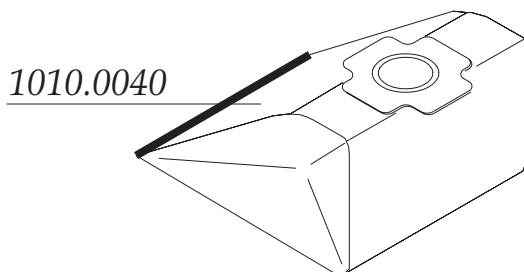
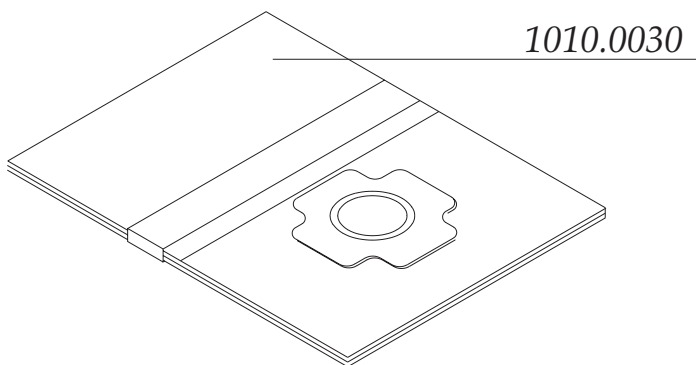
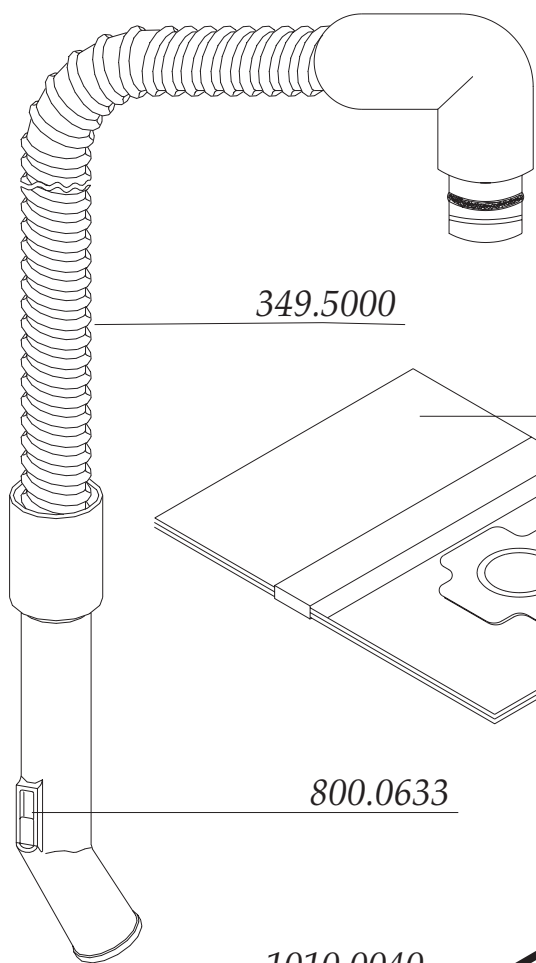
II SUCTION UNIT TYPE 308.2000



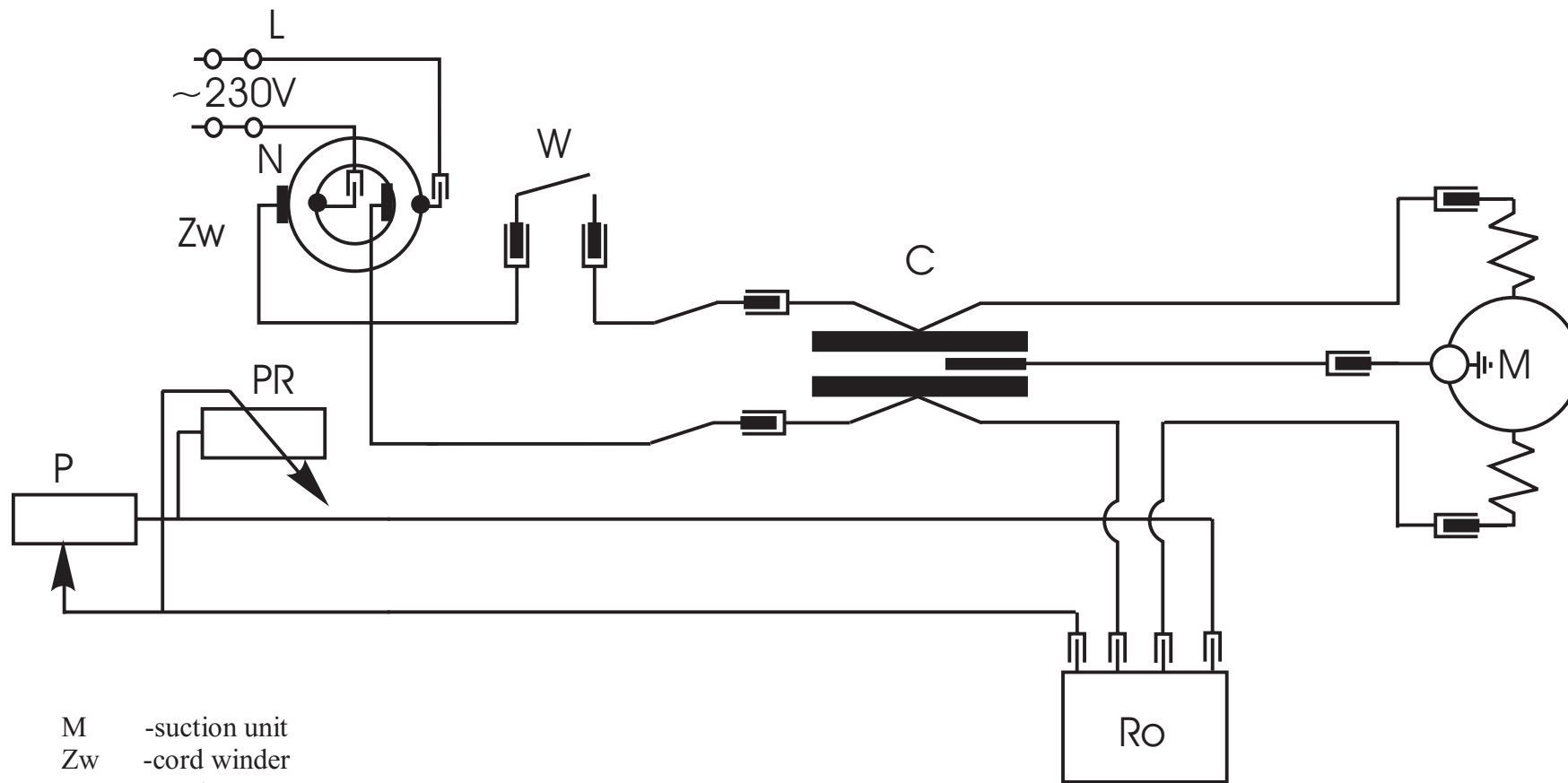
III CORD WINDER 159.8000



IV VACUUM CLEANER ACCESSORIES
ZELMER TYPE 1117.0E (RAL 5022)
ZELMER HUNGARY



**V ELECTRICAL DIAGRAM OF THE VACUUM CLEANER
ZELMER TYPE 1117.0E (RAL 5022)
ZELMER HUNGARY**



- M -suction unit
- Zw -cord winder
- C -capacitor
- W -main switch
- PR -potentiometer
- Ro -speed controller
- P -adjustment potentiometer