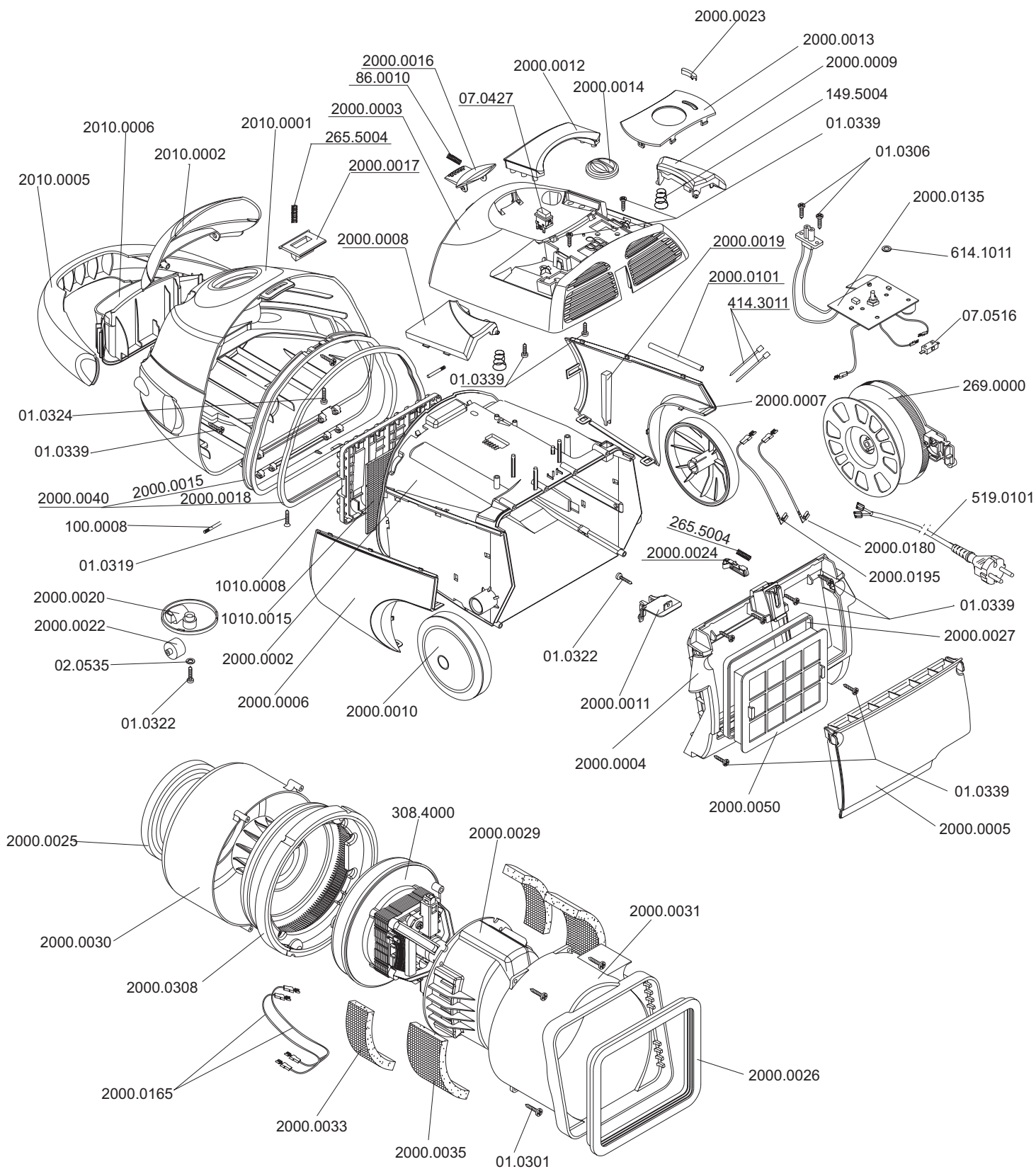
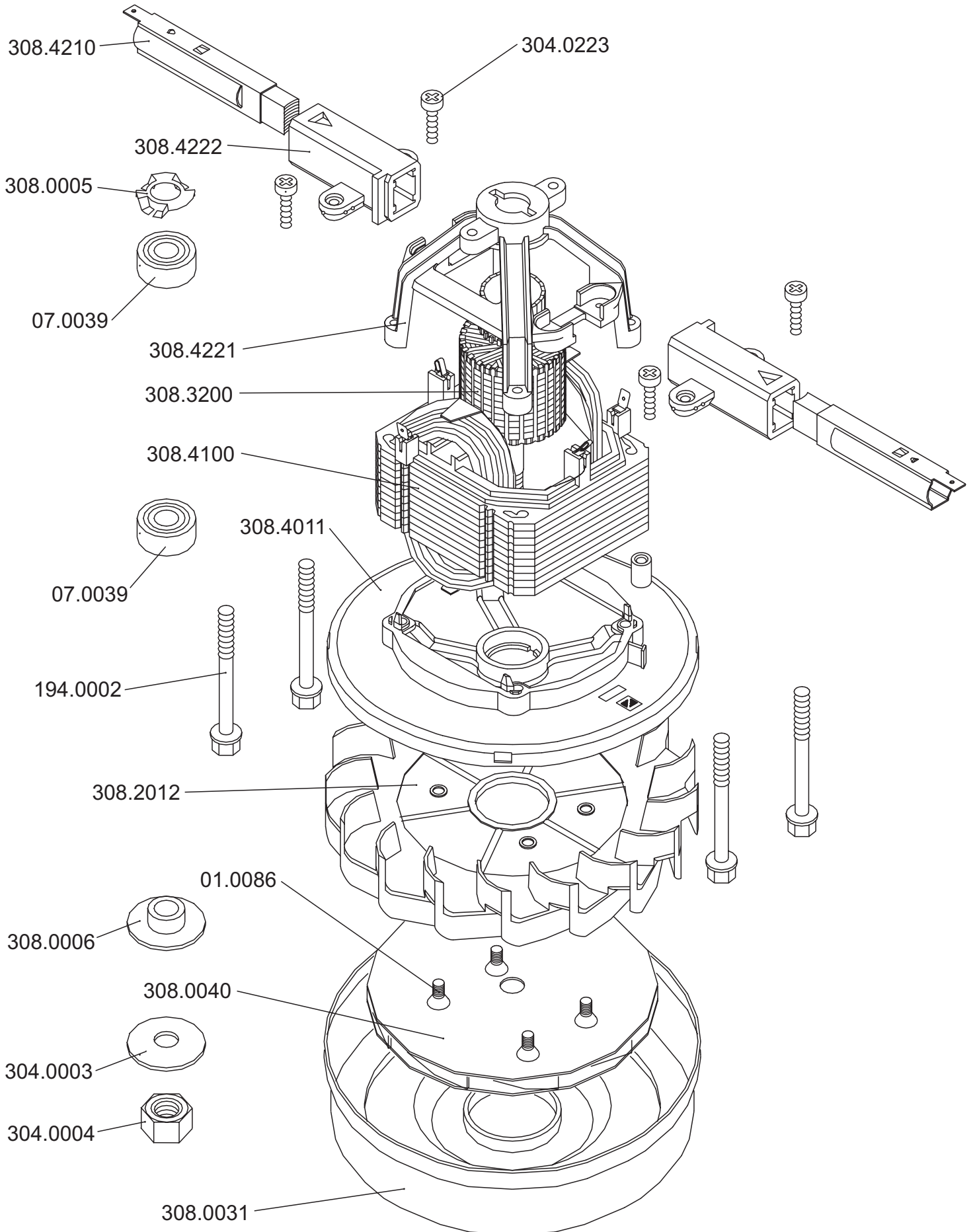


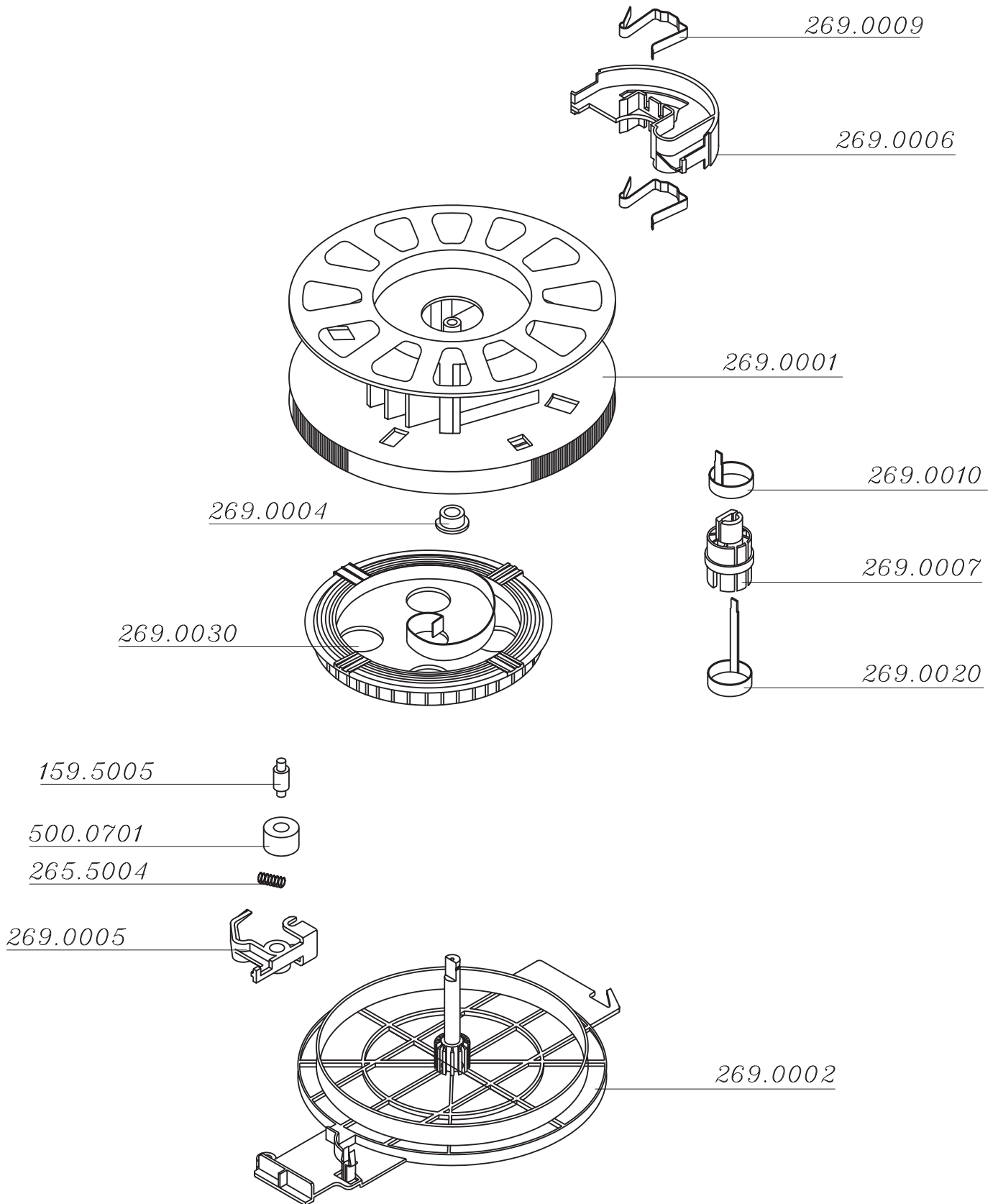
I VACUUM CLEANER ZELMER TYPE 2010.0.F08S (RED METALLIC) ZELMER HUNGARY



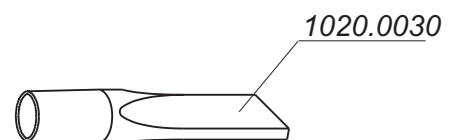
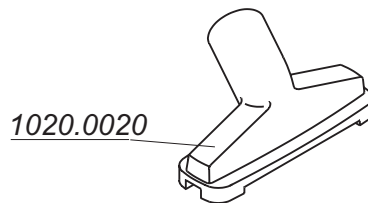
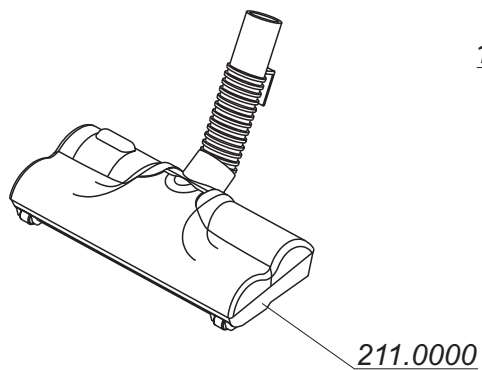
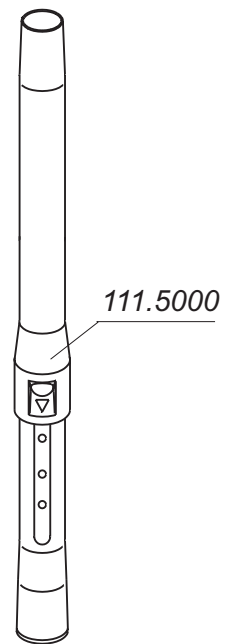
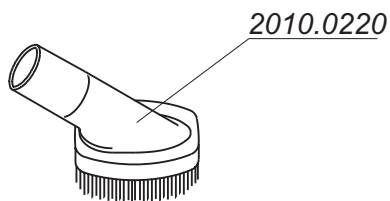
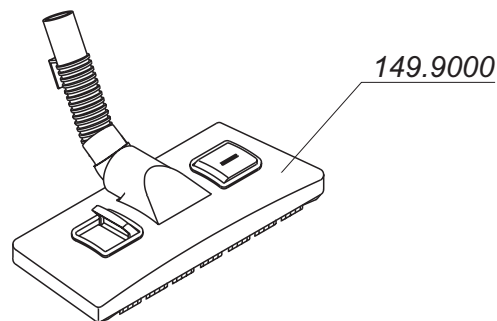
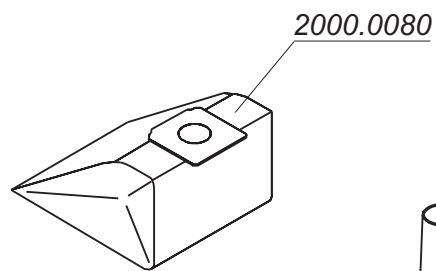
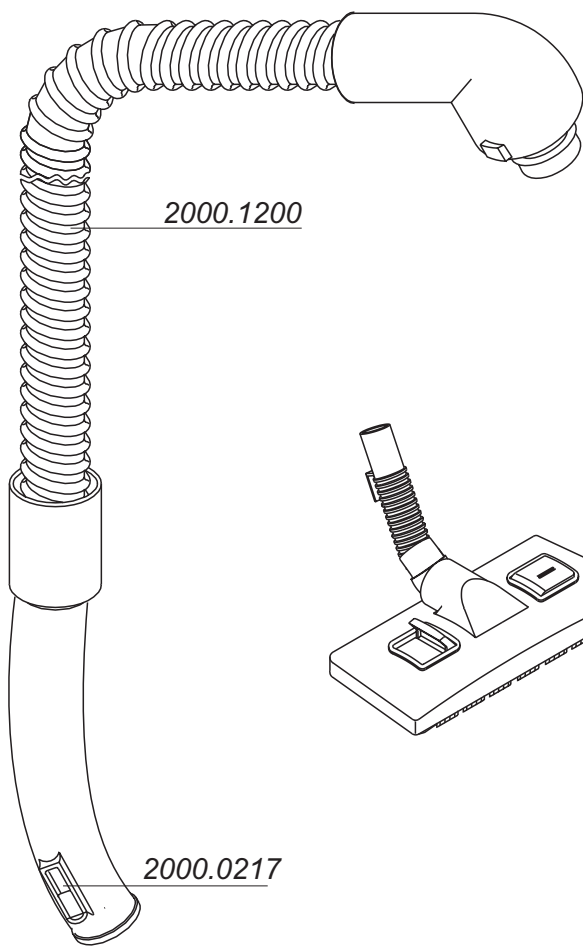
II SUCTION UNIT TYPE 308.4000



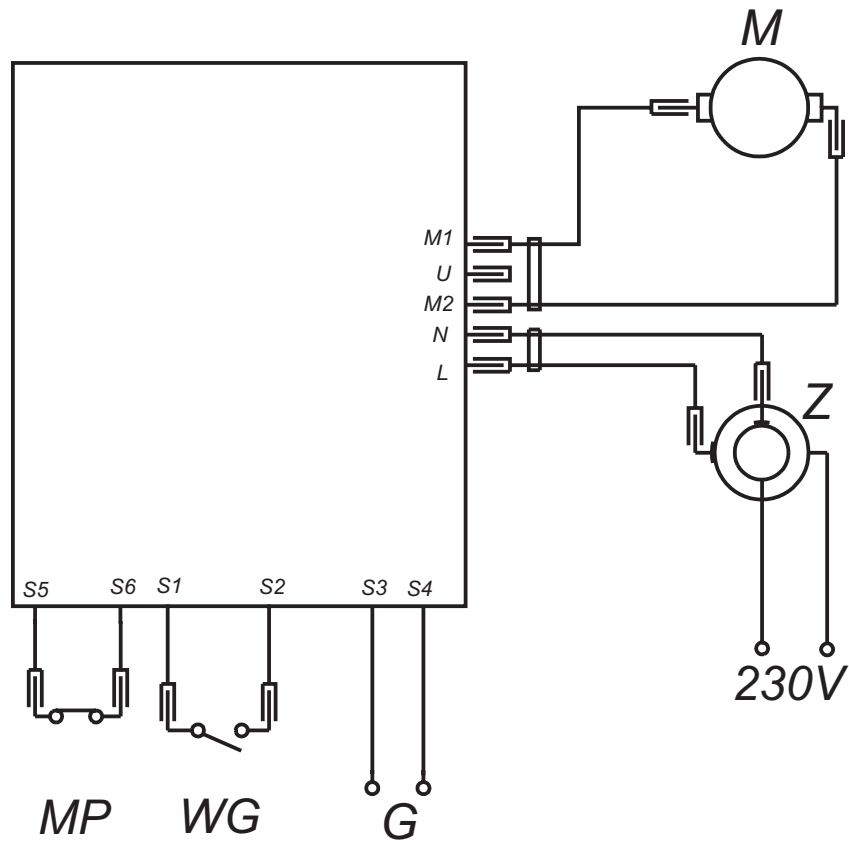
III CORD WINDER 269.0000



IV VACUUM CLEANER ACCESSORIES
ZELMER TYPE 2010.0.F08S (RED METALLIC)
ZELMER HUNGARY



V ELECTRICAL DIAGRAM OF THE VACUUM CLEANER ZELMER TYPE 2010.0.F08S ZELMER HUNGARY



- M -suction unit
- MP -parksystem microswitch
- WG -main switch
- Z -cord winder
- G - electrobrush - socket