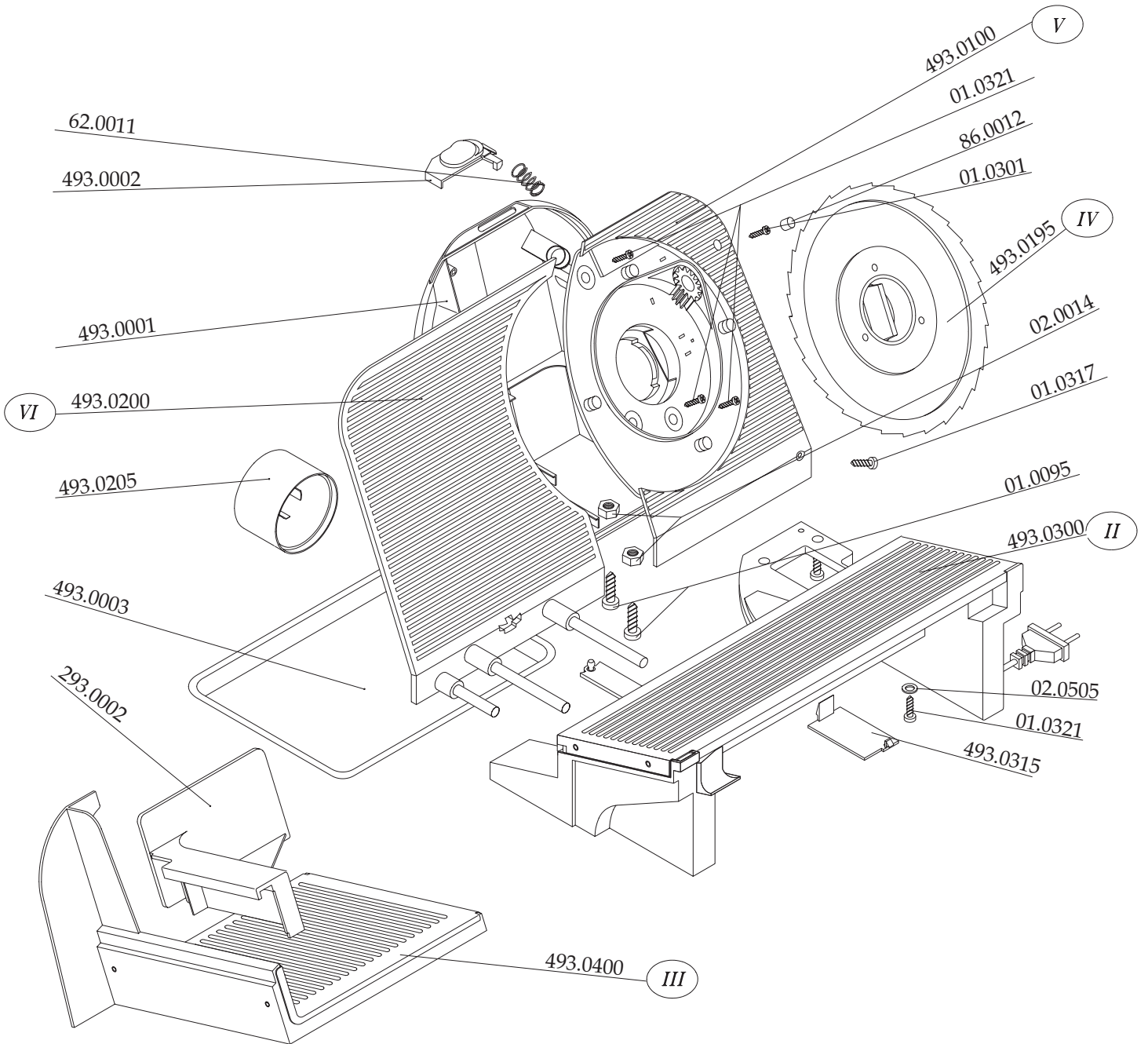


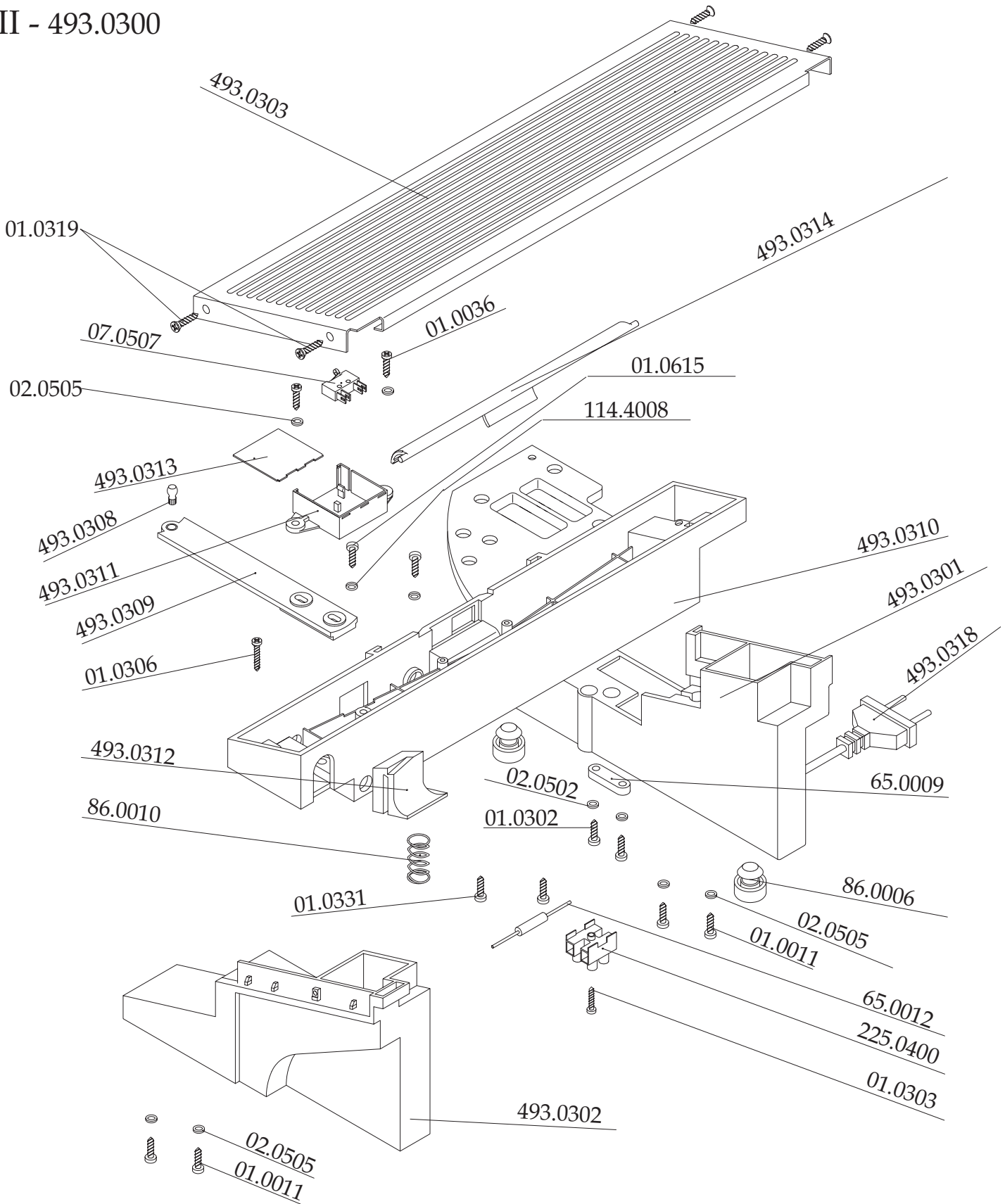
I ELECTRIC SLICER TYPE 493.4 ZELMER HUNGARY



II ELECTRIC SLICER TYPE 493.4

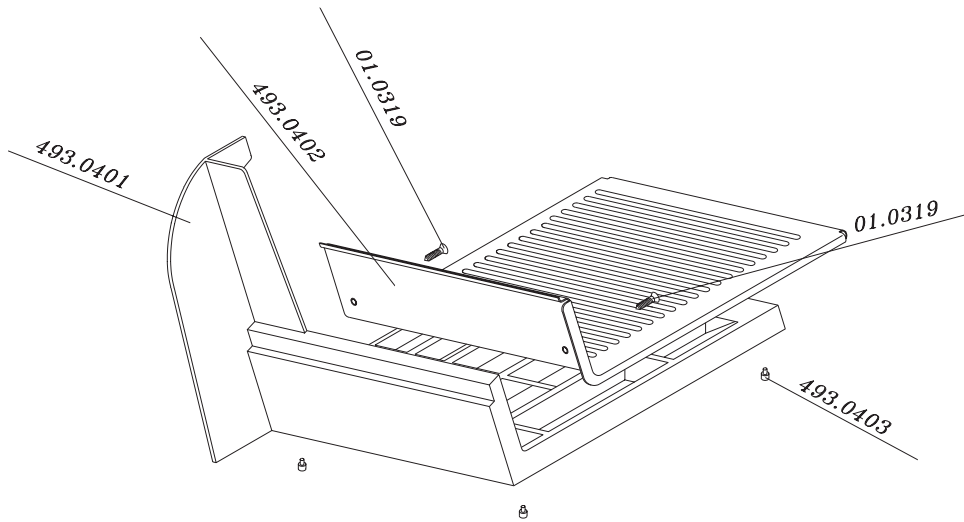
ZELMER HUNGARY

II - 493.0300

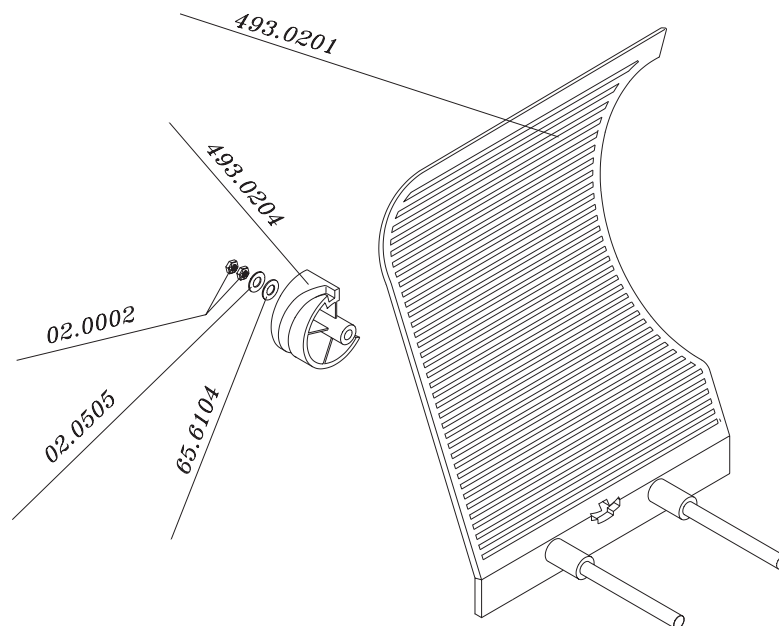


III ELECTRIC SLICER TYPE 493 ZELMER HUNGARY

III - 493.0400



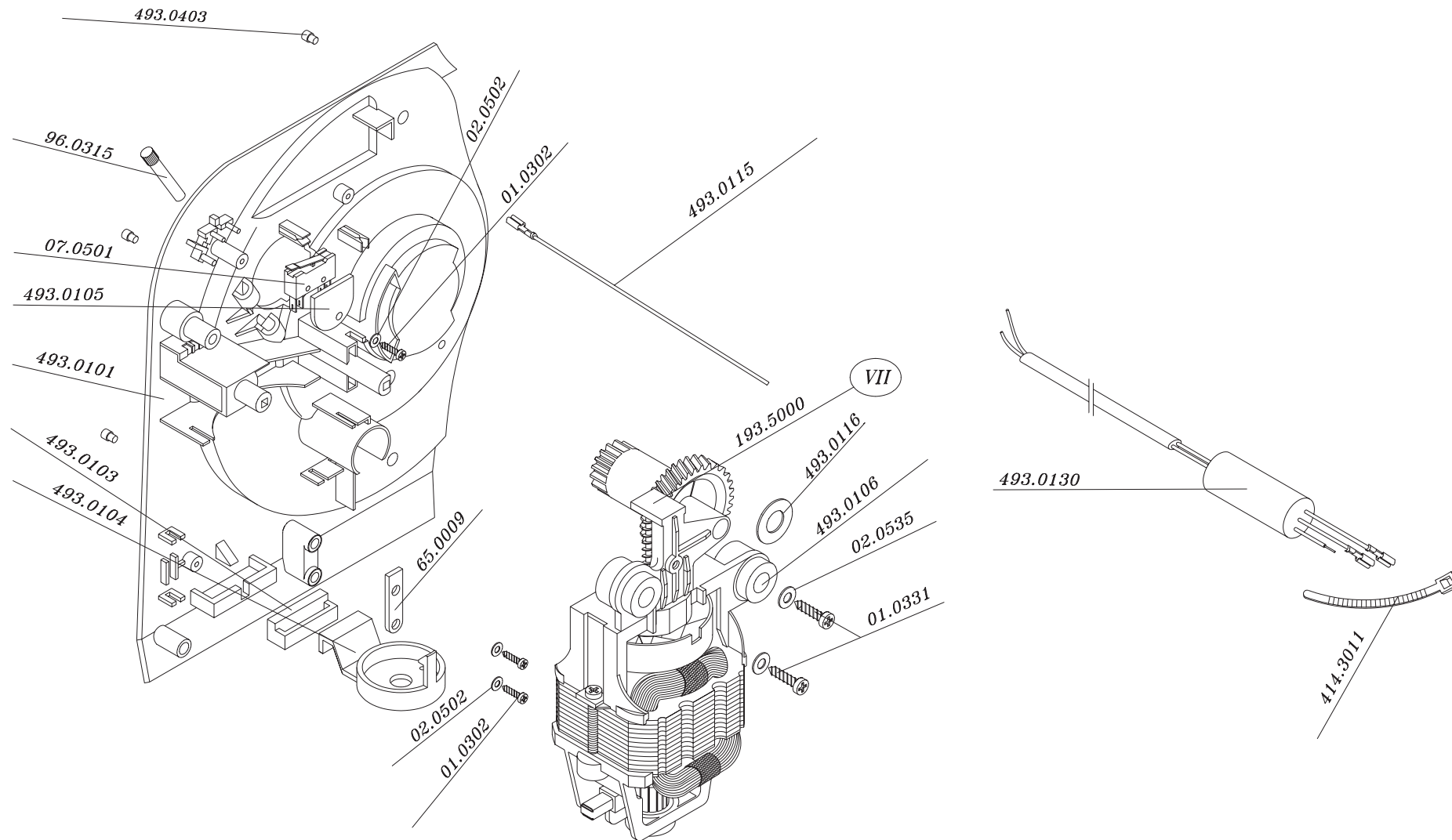
VI - 493.0200



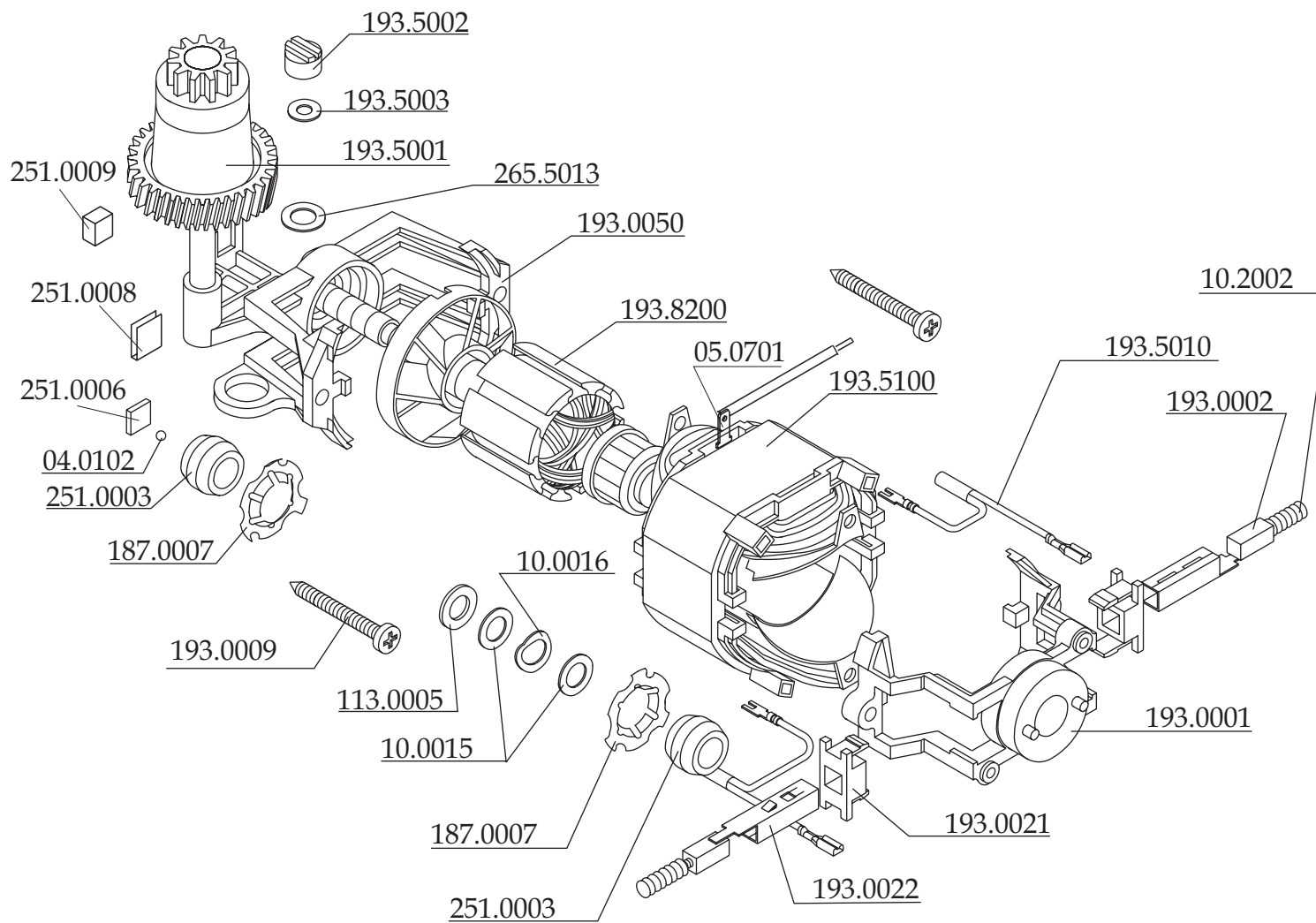
IV ELECTRIC SLICER TYPE 493.4

ZELMER HUNGARY

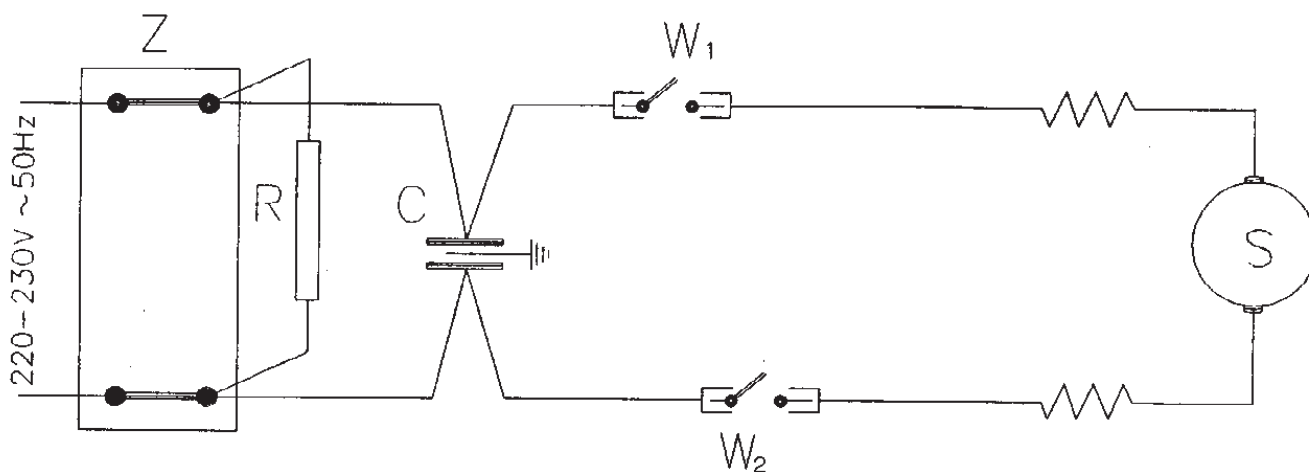
V - 493.0100



V MOTOR TYPE 193.5000



VI ELECTRIC DIAGRAM OF THE ELECTRIC SLICER TYPE 493.4 ZELMER HUNGARY



- W₁ - microswitch
- W₂ - microswitch
- S - motor
- C - capacitor
- Z - 2-pole block
- R - resistor